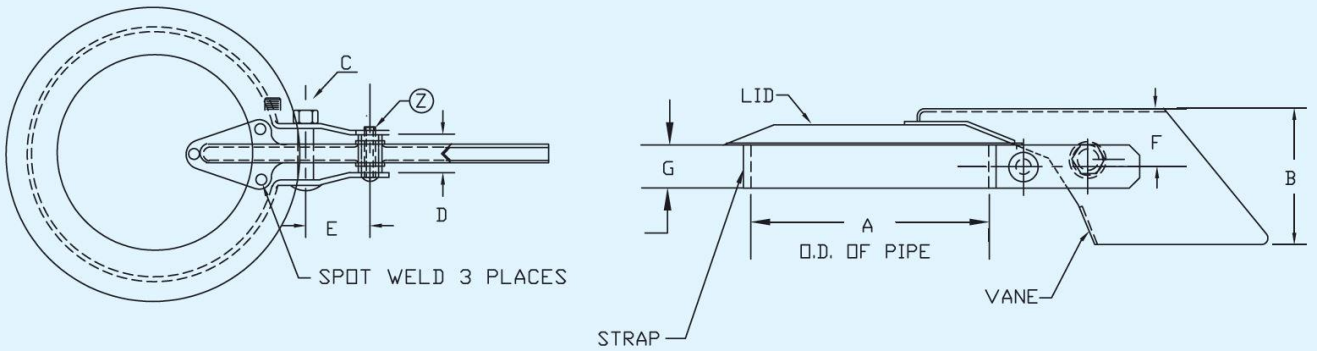


# 304SS Exhaust Rain Caps

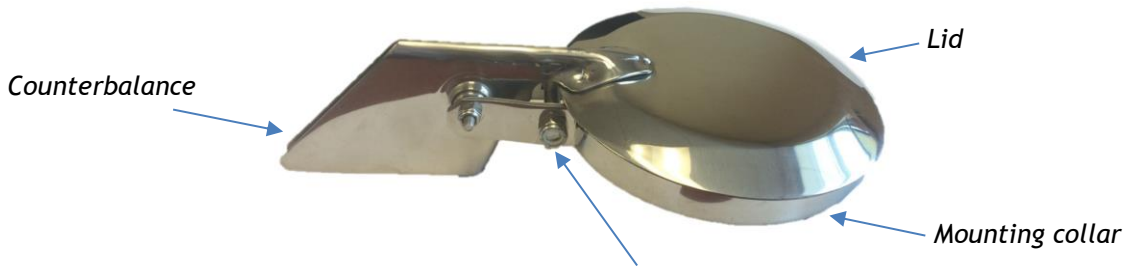
## Raincap Specifications



A	B	C	D	E	F	G	STRAP / MAT'L	VANE / MAT'L	LID / MAT'L
Under 2"	2	¼-20 x 1½	5/8	1	7/8	¾	13 GA. (0.090") HPRO	16 GA. (0.060") CR	18 GA. (0.050") CR
2' & UP	2¾"	5/16-18 x 2	1	1½	1	7/8	11 GA. (0.120") HPRO	15 GA. (0.071") CRRDQAK1008B50	18 GA. (0.050") CR

### Rain cap features:

- 304 Stainless Steel construction
- Operating temperatures: Max 1700 deg F
- Counter balanced lid allows easy opening and closing. Keeps rain and debris from entering.
- Easy installation – position collar over exhaust pipe and tighten one bolt.



*Tighten bolt to clamp mounting collar to exhaust stack*

Pipe Fittings Direct  
 690 Craig Rd  
 Edgerton, WI 53534  
 Phone: 608-554-6942  
 Fax: 608-531-2039  
 E-mail: admin@pipefittingsdirect.com  
 www.pipefittingsdirect.com